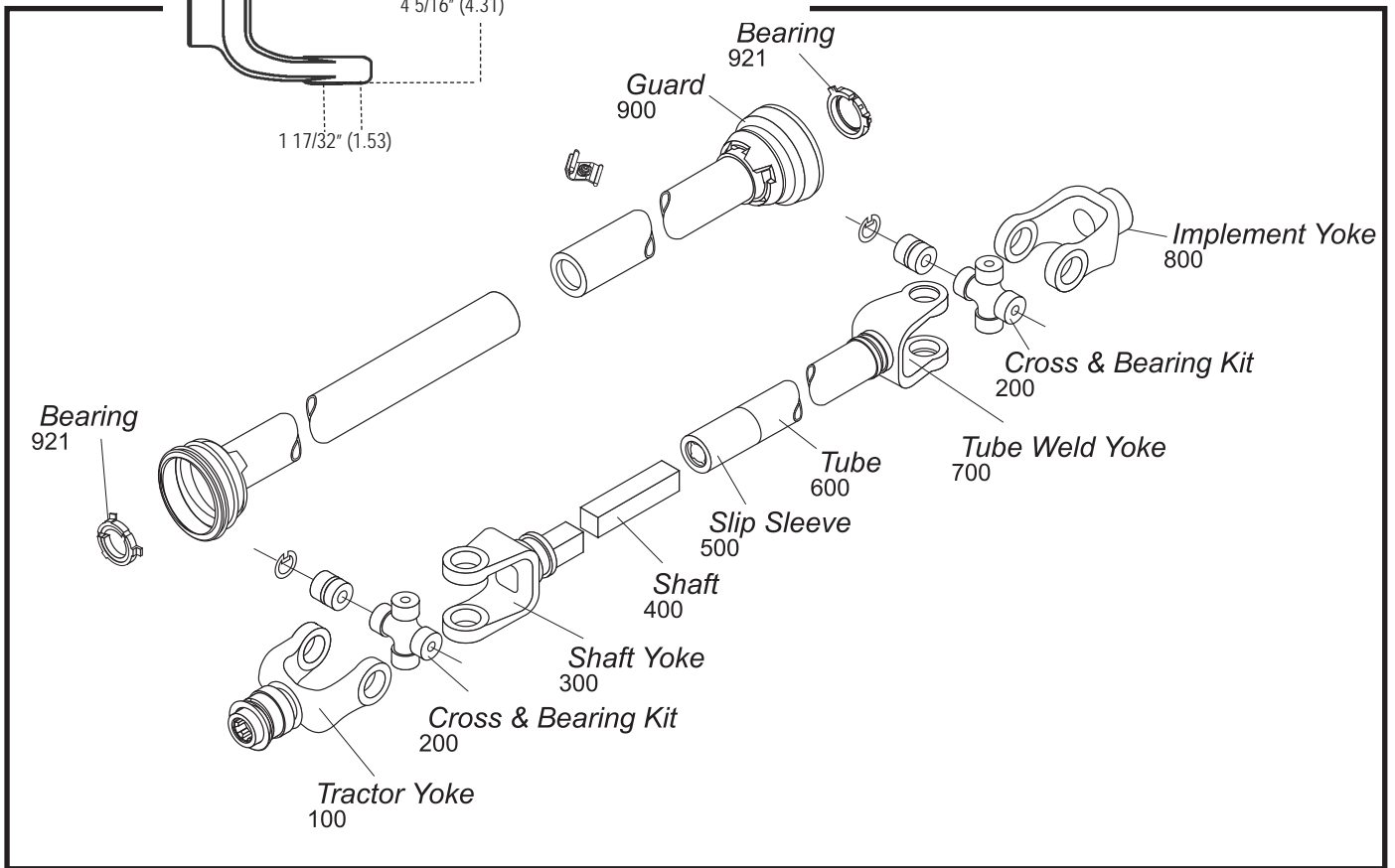


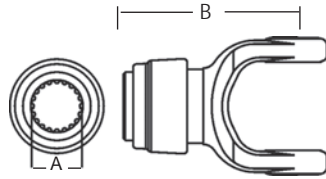
55 Series



Tractor Yoke

Safety Slide Lock

Repair Kit —
*13004000
**13004020

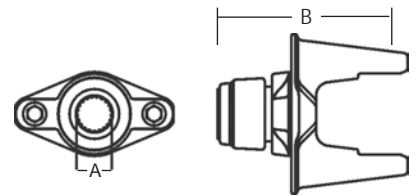


Stock Number	Dim. "A" Bore	Dim. "B"
101-5506*	1 3/8" × 6 Spl.	5 13/16"
101-5520**	1 3/4" × 20 Spl.	6"
101-5521*	1 3/8" × 21 Spl.	5 13/16"

Ball Shear Device

With Safety Slide Lock

Repair Kit —
*13004000
**13004020

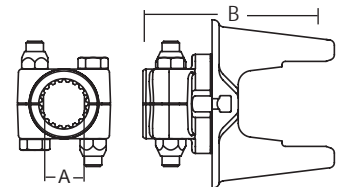


Stock Number	Dim. "A" Bore	Dim. "B"	Shear Bolt
104-5506*	1 3/8" × 6 Spl.	6 1/8"	(2) 3/8" x 16 Gr. 5
104-5520**	1 3/4" × 20 Spl.	6 5/8"	(2) 3/8" x 16 Gr. 5
104-5521*	1 3/8" × 21 Spl.	6 1/8"	(2) 3/8" x 16 Gr. 5

Replacement Shear Bolt Part # 11-10445

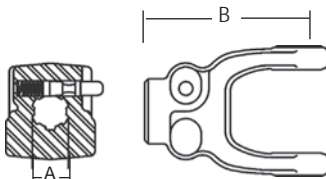
Ball Shear Device Clamp-Style

Stock Number	Dim. "A" Bore	Dim. "B"
114-5520	1 3/4" × 20 Spl.	5 13/16"



Quick Disconnect

Repair Kit —
*13002006
**13002021
***13002020
****13002806

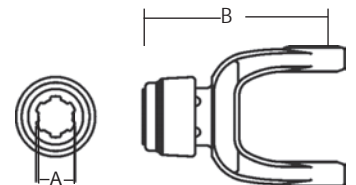


Stock Number	Dim. "A" Bore	Dim. "B"
102-5506*	1 3/8" × 6 Spl.	5 5/8"
102-5521**	1 3/8" × 21 Spl.	5 1/8"
102-5520***	1 3/4" × 20 Spl.	6 1/8"
102-5528****	1 3/4" × 6 Spl.	5 5/8"

Auto-Lok

Repair Kit
*13004000
**13004020

Stock Number	Dim. "A" Bore	Dim. "B"
110-5506*	1 3/8" × 6 Spl.	5 13/16"
110-5520**	1 3/4" × 20 Spl.	6"
110-5521*	1 3/8" × 21 Spl.	5 13/16"

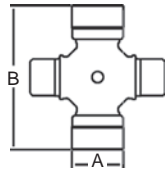


Cross & Bearing Kit

(R-Kit)

(Recommended 8 hour grease interval)

Snap Ring Located in Yoke



Stock Number	Dim. "A"	Dim. "B"
200-5500	1 17/32"	4 5/16"

Spline Shaft

Induction Hardened



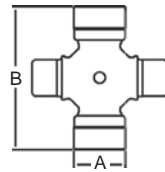
Stock Number	Dim. "A"	Length	Major Dim.
404-2720	1 11/16" x 20 Spl.	3'	1.790/1.785

Extended Lubrication Cross & Bearing Kit

(E-Kit)

(Recommended 50 hour grease interval)

Snap Ring Located in Yoke



Stock Number	Dim. "A"	Dim. "B"
201-5500	1 17/32"	4 5/16"

Slip Sleeve

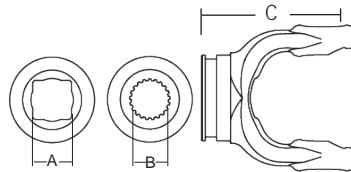


With Grease Groove

Stock Number	Dim. "A" Bore	Dim. "B" Bore	Length	Fits Tube Size.
500-4400		1 5/16" Sq.	5"	2 1/2" (.120 Wall)
505-3500	1 11/16" x 20 Spl.		5"	2 1/2" (.120 Wall)

Shaft Weld Yoke

With Bearing Groove
(Guard must rotate freely on yoke)



Stock Number	Dim. "A" Bore	Dim. "B" Bore	Dim. "C"
300-5500	1 5/16" Sq.		4 1/8"
301-5500*	1 3/16" Sq.		4 3/8"
302-5500		1 11/16" x 20 Spl.	3 3/4"

*Use 04-15155 Nylon Bearing

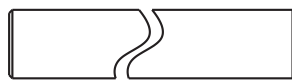
With Grease Reservoir



Stock Number	Dim. "A" Bore	Dim. "B" Bore	Length	Fits Tube Size.
503-3500	1 11/16" x 20 Spl.		8"	2 1/2" (.120 Wall)
504-3500		1 5/16" Sq.	8"	2 1/2" (.120 Wall)

Shaft

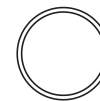
1 5/16" Square



Stock Number	Length
400-0021	6'
404-0021	3'

Tube

2 1/2" (.120 Wall)

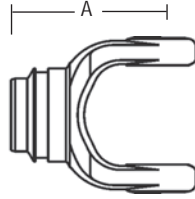


Stock Number	Length
602-4400	6'
604-4400	3'

55 Series (cont'd.)

Tube Weld Yoke

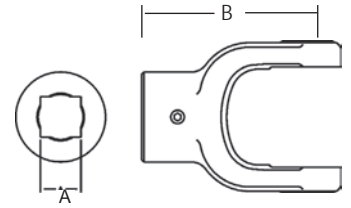
With Bearing Groove
(Guard must rotate freely on yoke)



Stock Number	Dim. "A"	Fits Tube Size
701-5500	4 5/8"	2 1/2" (.120 wall)
*704-5500 (with bore)	4 5/8"	2 1/2" (.120 wall)

* Bore through for Telescoping

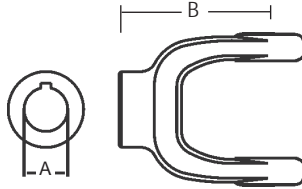
Square Bore With Set Screw



Stock Number	Dim. "A" Bore	Dim. "B"
804-5520	1 1/4"	4 5/8"

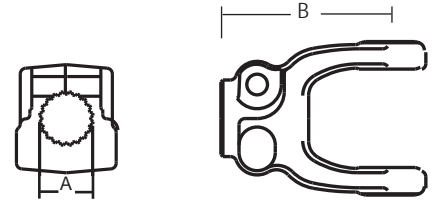
Implement Yoke

Round Bore
With Keyway & Set Screw



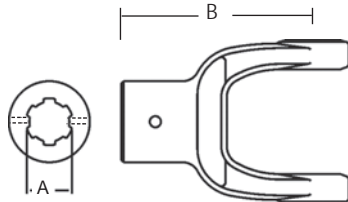
Stock Number	Dim. "A" Bore	Dim. "B"	Standard Keyway
800-5522	1 3/8"	4 1/2"	5/16"
800-5524	1 1/2"	4 5/8"	3/8"
800-5526	1 5/8"	4 5/8"	3/8"
800-5528	1 3/4"	4 5/8"	3/8"
800-5532	2"	4 5/8"	1/2"

Clamp Yoke



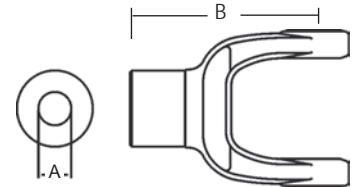
Stock Number	Dim. "A" Bore	Dim. "B"
807-5506	1 3/8" x 6 Spl.	5 5/8"
807-5520	1 3/4" x 20 Spl.	5 1/4"
807-5521	1 3/8" x 21 Spl.	5 1/4"
807-5527	1 3/4" x 27 Spl.	5 5/8"
807-5528	1 3/4" x 6 Spl.	5 5/8"

Spline Bore
With 21/64" Pin Hole



Stock Number	Dim. "A" Bore	Dim. "B"
801-5506	1 3/8" x 6 Spl.	4 1/2"
801-5521	1 3/8" x 21 Spl.	4 1/2"

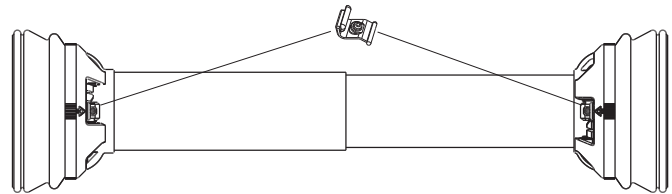
Stock Bore With Hub O. D. Turned



Stock Number	Dim. "A" Bore	Dim. "B"
809-5516	1"	5 5/8"

Guard

Order Bearings as Required



Stock Number	Overall Driveline Length	Bearing Kit (2-per kit)
902-3548	48"	921-4400
902-3560	60"	921-4400

Assembly instructions included with guard bearing kit
NOTE: Guards must rotate freely on yokes

Guard Chain Kit

Insert the "S" hook through the guard loop and crimp shut



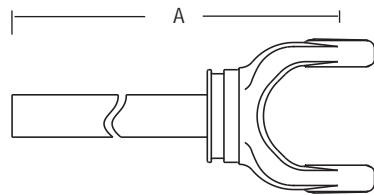
Part Number: 13006500 (2-per Kit)

Easy Lock™ Replacement Kit

Part Number: 13005000 (4-per Kit)

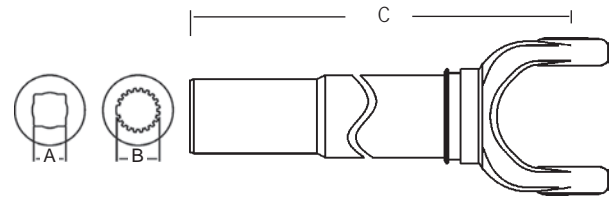


Yoke & Shaft Assembly



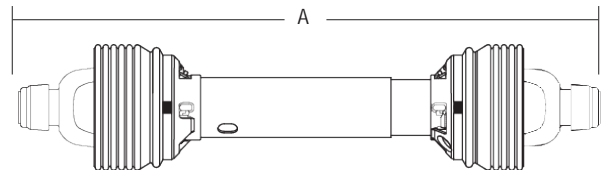
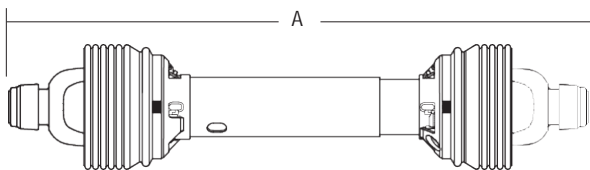
Stock Number	Shaft Size	Dim. "A"
10005548	1 5/16"	32.75"
10005560	1 5/16"	44.88"
10015548	1 11/16" × 20 Spl.	32.75"

Yoke, Tube & Sleeve Assembly



Stock Number	Dim. "A" Bore	Dim. "B" Bore	Dim. "C"
11005548	1 5/16" Sq.		33.38"
11005560	1 5/16" Sq.		45.38"
11015548		1 11/16" × 20 Spl.	33.38"

Drivelines

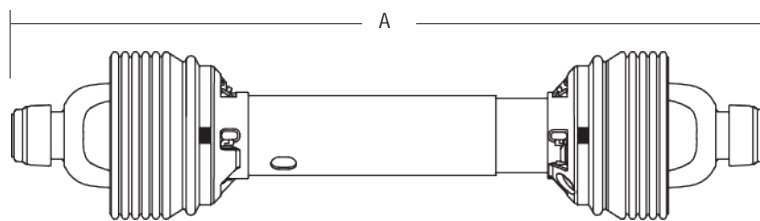


Drivelines are furnished without Cross & Bearing Kit and Implement Yoke. Select kit and yoke as required. When cross & bearing kit and yoke are assembled, the overall compressed length of the driveline will be 48" or 60".

Drivelines are furnished without Cross & Bearing Kit and Outboard Yokes. Select kit and outboard yokes as required. When cross & bearing kit and outboard yokes are assembled, the overall compressed length of the driveline will be 48", 58" or 60".

Stock Number	Shaft Size	Tractor Yoke	Overall Compressed Length Dim. "A"	Max. Length
14005548	1 5/16"	1 3/8" × 6 Spl. Q.D.	48"	72"
14005560	1 5/16"	1 3/8" × 6 Spl. Q.D.	60"	96"
14045548	1 11/16" × 20 Spl.	1 3/8" × 6 Spl. Q.D.	48"	72"

Stock Number	Shaft	Overall Compressed Length Dim. "A"	Max. Length
14015548	1 5/16" Sq.	48"	72"
14015560	1 5/16" Sq.	60"	96"
14055548	1 11/16" × 20 Spl.	48"	72"
14055558	1 11/16" × 20 Spl.	58"	92"



Stock Number	Tractor Yoke	Implement Yoke	Overall Compressed Length Dim. "A"	Max. Length	Application	Shaft Size
14005537	1 3/8" × 6 Spl. Safety Slide Lock	1 3/8" × 6 Spl. Safety Slide Lock	37"	50"	All Purpose	1 5/16" Sq.
14005546	1 3/4" × 20 Spl. Safety Slide lock	1 3/4" Rd. w/ Keyway and (2) Set Screws	46"	68"	All Purpose	1 11/16" × 20 Spl.